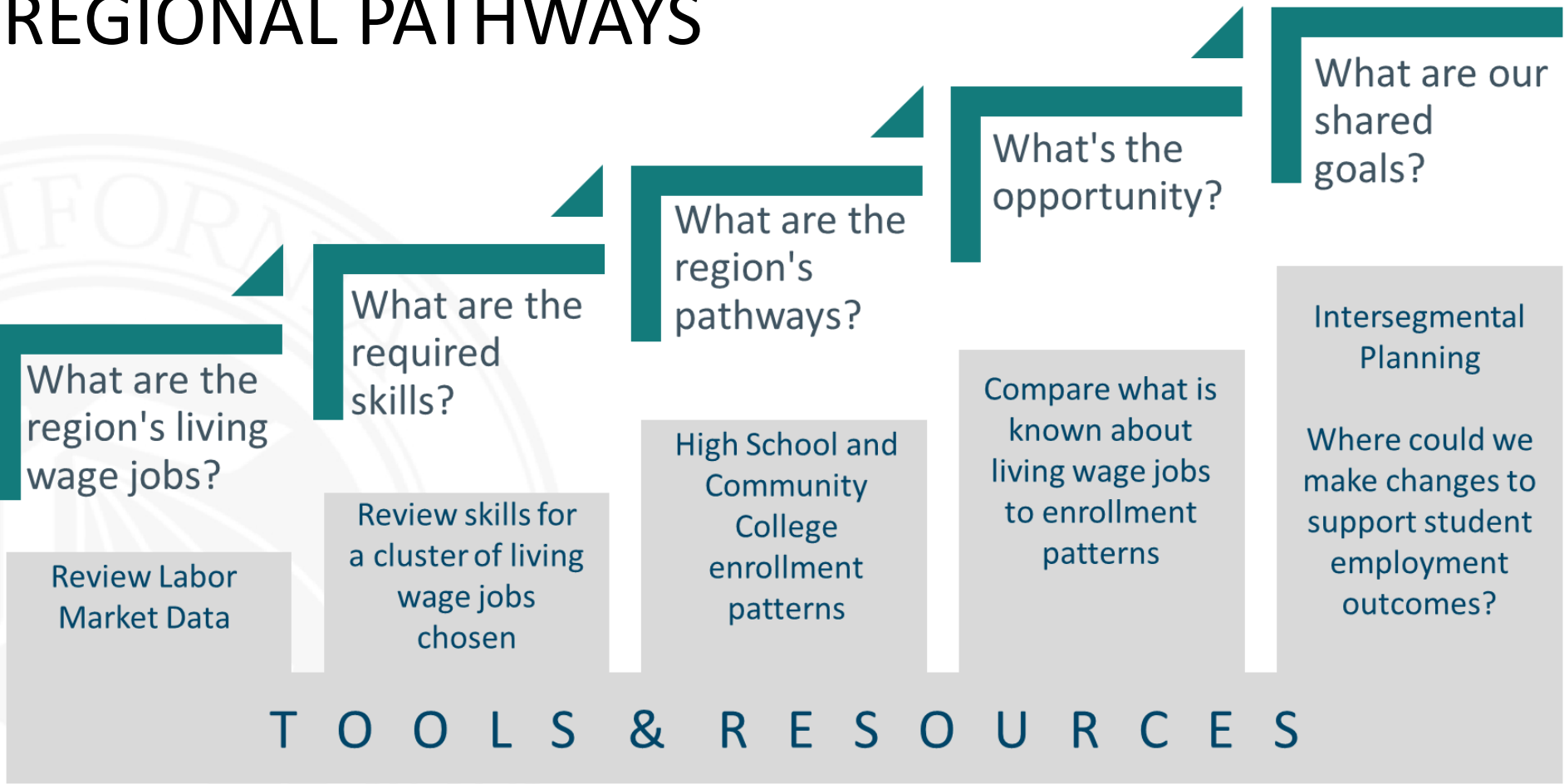


BUILDING DATA-INFORMED REGIONAL PATHWAYS



Resources to support K14 alignment discussions

Steppingstone	Data Resource Contains	Data Source Title
What are the region's living wage jobs?	Labor market data by county using Standard Occupational Codes (SOC). <i>*Consider also connecting with the Centers of Excellence</i>	EDD OES Employment and Wages
What are the required skills?	Lists skills for specific SOC codes and occupational titles and includes publicly available skills information.	ONET
	For this work, WestEd used the EMSI job posting analytics tool that aggregates skills from job postings. However, only some skills data is publicly available <u>through an API</u> .	EMSI Job Postings Analytics Tool
What are the region's pathways? High School	Includes high school enrollment data by, region, district and School Name, CTE Pathway Code and Name, CTE Sector Code and Name, High School Enrollment.	California 2018-17 Enrollment Data
What are the region's pathways? Community College	Retrieve full time enrollment for a variety of course statuses at either the two, four, or six-digit TOP code. Can also include demographic breakouts of age, gender, ethnicity.	DataMart
	Retrieve active Community College awards, including CTE awards and certificates.	COCI Database
Compare what is known about living wage jobs to enrollment patterns Crosswalks	Connects High School CTE pathways with similar and relevant Community College programs.	K12 to TOP Crosswalk
	Using two crosswalks, connects Community College TOP codes to Standard Occupational Codes (SOC) using CIP codes as a connector.	TOP to CIP to SOC Crosswalks

